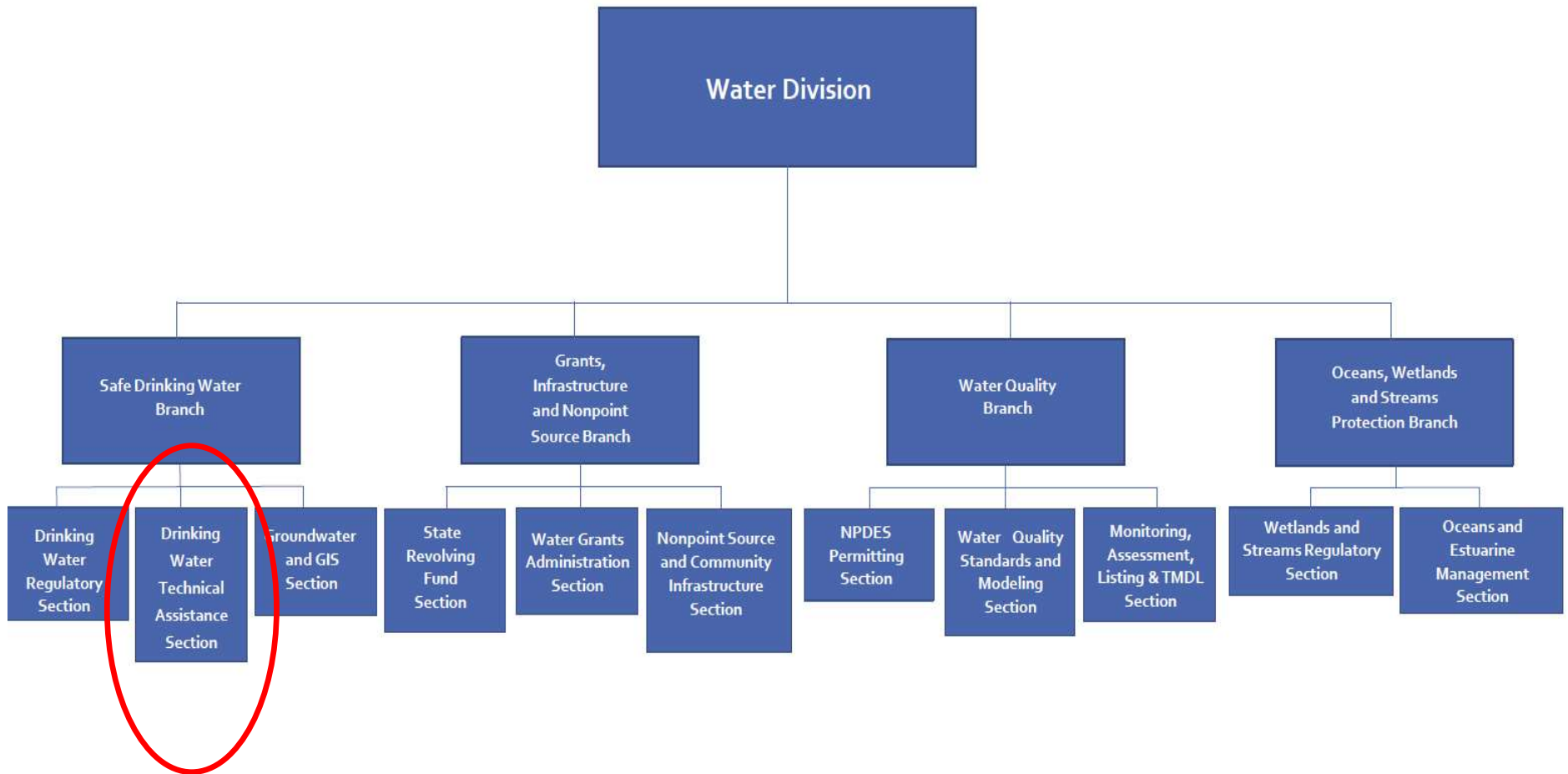




Drinking Water Technical Assistance Section: TA Resources

Region 4 | EPA

Safe Drinking Water Branch | Water Division



Drinking Water Technical Assistance Section

What We Do?

- The Drinking Water Technical Assistance Section (DWTAS) provides technical support to states for the following programs:
 - Small, Underserved and Disadvantaged Communities (SUDC)
 - Emerging Contaminants in Small or Disadvantaged Communities
 - Voluntary Lead Testing in Schools and Childcare Facilities
- We also provide technical assistance to states, communities and tribes to address key priorities (e.g., PFAS, service line inventories, lead service line replacements)
- We connect communities with technical assistance available through our Environmental Finance Centers (EFCs) and other technical assistance provider programs

DWTAS: Programs & State Allocations


- SUDC Grant Program

- Designed to address health-based violations at PWSs serving small (<10K), underserved communities
- ADEM has been allocated \$739,000 in funds under this program
 - FY18/19/21 Rollover, FY22 and FY23 allocations

- EC-SDC Grant Program

- Designed to address emerging contaminants in drinking water supply
- Target PWSs must be small or meet disadvantaged criteria established by ADEM
- ADEM has been awarded \$52,638,000 in FY22/FY23 funds

- Voluntary Lead Testing in Schools/Childcare Facilities

- Designed to address lead in schools/childcare facilities
 - Alabama has been allocated \$726,000 in FY22/FY23 funds
- 



Technical Assistance Programs

Water Technical Assistance (WaterTA) Program

- Office of Water (OW/HQ) led the release of this TA program in February 2023
- OW/HQ selected EFCs to serve states in Regions
- EFCs can help support a variety of water system needs

EPA WaterTA
Supports
Communities to:



Identify water challenges



Plan for solutions



Increase community engagement



Build technical, financial, managerial capacity



Develop application materials to access water infrastructure funding

Environmental Finance Centers



- EPA awarded funds to regional and national EFCs – all R4 EFCs have been funded now!
- National EFCs include:
 - Moonshot Missions
 - Rural Community Assistance Partnership
 - Sand County Foundation
 - U.S. Water Alliance – University of North Carolina
- Regional EFCs have a scope of work that can focus on either multimedia or water infrastructure.



Category 1 - Regional Multi-Environmental Media EFCs

EPA Region	EFC
1	University of Maine System
2	Syracuse University
3	Low Impact Development Center Inc.
3	University of Maryland
4	University of North Carolina
4	Urban Sustainability Directors Network
5	Michigan Technological University
6	University of New Mexico
7	Wichita State University
8	National Rural Water Association
9	University Enterprises, Inc. dba Sac State Sponsored
10	Rural Community Assistance Corporation

Category 2 – Regional Water Infrastructure EFC with Bipartisan Infrastructure Law Funding

EPA Region	EFC
1	University of Maine System
2	Syracuse University
3	University of Maryland
4	University of North Carolina at Chapel Hill
4	Southeast Rural Community Assistance Project Inc.
5	WSOS Community Action Commission Inc.
5	Delta Institute
6	University of New Mexico
7	Wichita State University
8	National Rural Water Association
9	Rural Community Assistance Corporation
9	Hawaii Community Foundation
10	Rural Community Assistance Corporation



Technical Assistance for Lead in Drinking Water

EPA TA Resources to Address Lead

- Guidance for Developing and Maintaining a Service Line Inventory
- EPA Inventory Template
- Small Entity Compliance Guidance
- Webinars

EPA R4 Lead TA Opportunities

- EPA Region 4 Team discusses the Lead and Copper rule suite with states
- State workgroup meetings held quarterly
- Team available to systems and states for questions on inventories and upcoming LCRR/LCRI
- Contact inhorn.emma@epa.gov for Region 4 LCR questions

Accessing Infrastructure Funding
 Assessing Your Utility's Financial Position
 Capital Improvement Planning
 Customer Service/Public Outreach
 Engaging The Public In Decision Making
 Environmental Equity And Justice
 Environmental Reviews
 Financial Management
 Lead Service Lines
 Preliminary Engineering Reports
 Rates And Fiscal Planning
 Regionalization And Partnerships
 SRF Process
 How To Select & Pay For Engineers/Consultants
 Workforce Development & Planning

Highly Technical Staff With Water/Wastewater Experience
 Financial And Operational Assessments
 Operation And Maintenance Planning
 Peer to Peer Advising

SERCAP

- Community engagement assessments
- Needs Assessments
- Planning
- Lead Services
- Capital Improvement Plan (CIP)
- Feasibility Studies
- GIS Mapping & Support
- Asset Management
- Environmental Reviews
- Resilience
- Climate Adaptation
- Stormwater
- Decentralized Systems
- Rates, revenues, income studies
- Funding/financing strategies

Direct Water Technical Assistance

- ✓ Accessing Infrastructure Funding
- ✓ Affordability/Customer Assistance
- ✓ Assessing Your Utility's Financial Position
- ✓ Asset Management
- ✓ Awwa Water Audit Training
- ✓ Basic Activated Sludge Processes
- ✓ Board/Elected Official Training
- ✓ Build America, Buy America
- ✓ Capital Improvement Planning
- ✓ Collaboration Strategies
- ✓ Collection System Asset Management & Rehab
- ✓ Compliance Topics (Various, As Needed)
- ✓ Customer Service/Public Outreach
- ✓ Davis-bacon Act
- ✓ Diverse And Inclusive Utilities
- ✓ Drought Planning/Management
- ✓ Emerging Contaminants
- ✓ Equipment Repair And Replacement
- ✓ Energy Management
- ✓ Engaging The Public In Decision Making
- ✓ Environmental Equity And Justice
- ✓ Environmental Reviews
- ✓ Financial Management
- ✓ Financial Metrics For Your Utility
- ✓ Lead Service Lines
- ✓ Leadership And Communication
- ✓ Nutrient Removal
- ✓ Operation And Maintenance
- ✓ Operator Certification
- ✓ Preliminary Engineering Reports
- ✓ Rates And Fiscal Planning
- ✓ Regionalization And Partnerships
- ✓ Regulatory Topics (Various, As Needed)
- ✓ Source Water Protection
- ✓ State Revolving Fund Process
- ✓ How To Select & Pay For Engineers/Consultants
- ✓ Technical Topics (Various, As Needed)
- ✓ Water Conservation Planning
- ✓ Water Efficiency/Water Loss Control
- ✓ Workforce Development & Planning
- ✓ Working With Professionals

Tribal Regionalization Lead
 Emerging Contaminants/Pfas
 Private Wells And/Or Septic Communities With Potential Public And/Or Environmental Health Risk
 Non Traditional/Hard To Reach Systems Such As Manufactured Housing Communities, Schools Etc.
 Stormwater (Year 2 And Beyond)

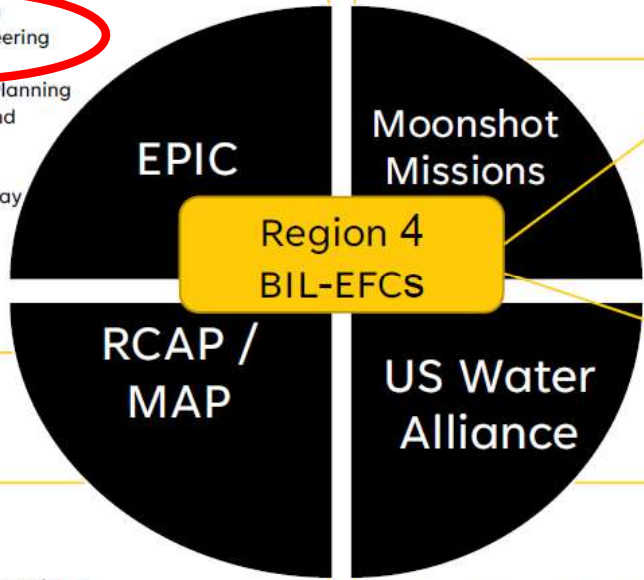
Trust-building And Community Engagement
 Water And Wastewater Finance
 Utility Management
 Cost Of Service And Rate Studies
 Stormwater Management

UNC

- Community engagement assessments
- Needs Assessments
- Planning
- Feasibility Studies
- Engineering
- Climate Adaptation
- Decentralized Systems
- Rates, revenues, income studies
- Funding/financing strategies
- Construction Management

EPA

- Collect Stories & Outcomes
- Reduce Duplication
- Match Resources To Needs
- Support TA Work

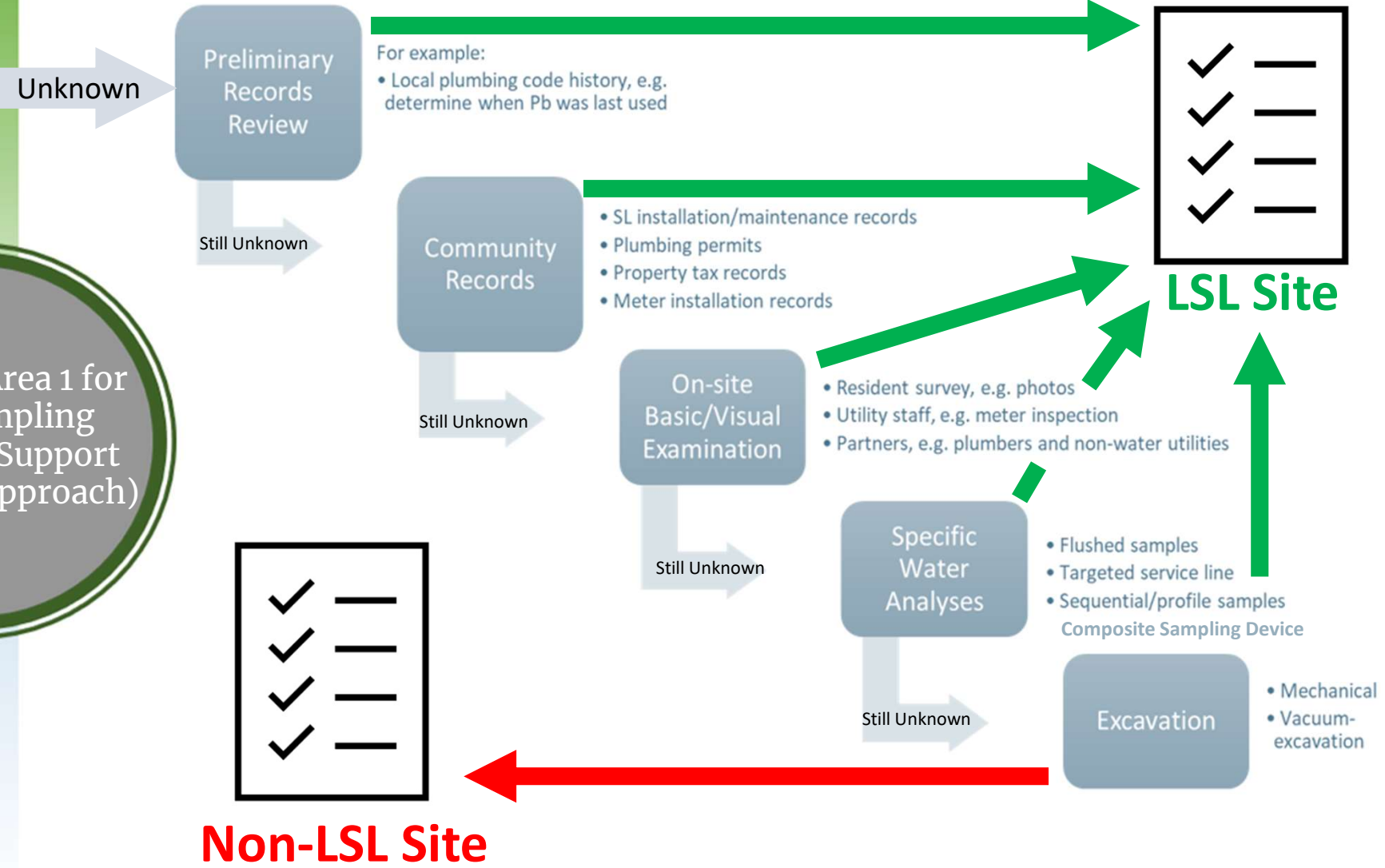


TA Opportunity – Research Project

- Lead Service Line Identification Research
- Supported by EPA's Office of Research and Development (ORD)
- Process overview
 - 1) Field Study (Stepwise Approach) to Evaluate LSL Identification (ID) Technologies
 - 2) Innovative/Advanced Technology Evaluation
 - 3) App/Model/Tool/Website Development
 - 4) Community Engagement



Proposed Area 1 for Field Sampling Technical Support (Stepwise Approach)

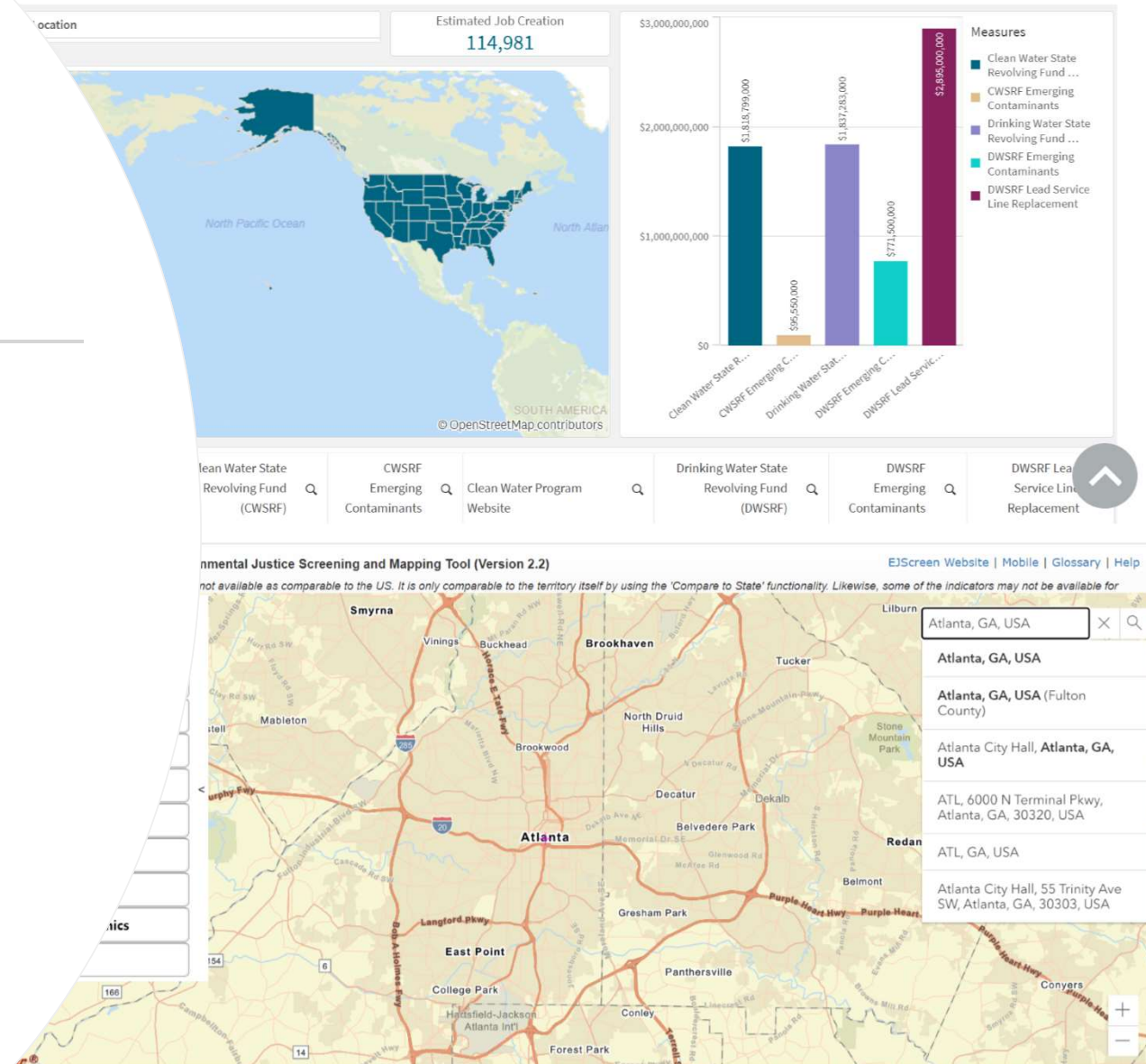




Technical Assistance for Emerging Contaminants (EC) in Drinking Water

PFAS/EC Resources

- EFCs/TA Providers
- EJ Screen
- PFAS Analytic Tools
- Echo
- SRF Interactive Tool
- Census Data
 - Population
 - Income
 - Education



Accessing Infrastructure Funding
 Assessing Your Utility's Financial Position
 Capital Improvement Planning
 Customer Service/Public Outreach
 Engaging The Public In Decision Making
 Environmental Equity And Justice
 Environmental Reviews
 Financial Management
 Lead Service Lines
 Preliminary Engineering Reports
 Rates And Fiscal Planning
 Regionalization And Partnerships
 SRF Process
 How To Select & Pay For Engineers/Consultants
 Workforce Development & Planning

Highly Technical Staff With Water/Wastewater Experience
 Financial And Operational Assessments
 Operation And Maintenance Planning
 Peer to Peer Advising

SERCAP

- Community engagement assessments
- Needs Assessments
- Planning
- Lead Services
- Capital Improvement Plan (CIP)
- Feasibility Studies
- GIS Mapping & Support
- Asset Management
- Environmental Reviews
- Resilience
- Climate Adaptation
- Stormwater
- Decentralized Systems
- Rates, revenues, income studies
- Funding/financing strategies

Direct Water Technical Assistance

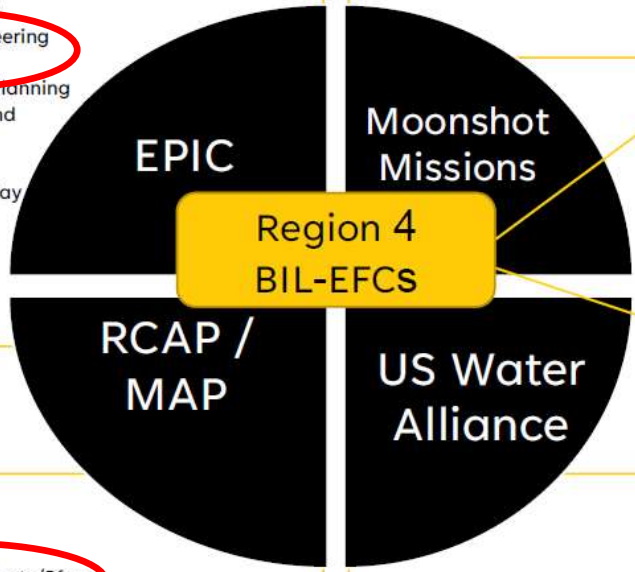
- ✓ Accessing Infrastructure Funding
- ✓ Affordability/Customer Assistance
- ✓ Assessing Your Utility's Financial Position
- ✓ Asset Management
- ✓ Awwa Water Audit Training
- ✓ Basic Activated Sludge Processes
- ✓ Board/Elected Official Training
- ✓ Build America, Buy America
- ✓ Capital Improvement Planning
- ✓ Collaboration Strategies
- ✓ Collection System Asset Management & Rehab
- ✓ Compliance Topics (Various, As Needed)
- ✓ Customer Service/Public Outreach
- ✓ Davis-bacon Act
- ✓ Diverse And Inclusive Utilities
- ✓ Drought Planning/Management
- ✓ Emerging Contaminants
- ✓ Equipment Repair And Replacement
- ✓ Energy Management
- ✓ Engaging The Public In Decision Making
- ✓ Environmental Equity And Justice
- ✓ Environmental Reviews
- ✓ Financial Management
- ✓ Financial Metrics For Your Utility
- ✓ Lead Service Lines
- ✓ Leadership And Communication
- ✓ Nutrient Removal
- ✓ Operation And Maintenance
- ✓ Operator Certification
- ✓ Preliminary Engineering Reports
- ✓ Rates And Fiscal Planning
- ✓ Regionalization And Partnerships
- ✓ Regulatory Topics (Various, As Needed)
- ✓ Source Water Protection
- ✓ State Revolving Fund Process
- ✓ How To Select & Pay For Engineers/Consultants
- ✓ Technical Topics (Various, As Needed)
- ✓ Water Conservation Planning
- ✓ Water Efficiency/Water Loss Control
- ✓ Workforce Development & Planning
- ✓ Working With Professionals

UNC

- Community engagement assessments
- Needs Assessments
- Planning
- Feasibility Studies
- Engineering
- Climate Adaptation
- Decentralized Systems
- Rates, revenues, income studies
- Funding/financing strategies
- Construction Management

EPA

- Collect Stories & Outcomes
- Reduce Duplication
- Match Resources To Needs
- Support TA Work



Tribal Regionalization
 Lead
 Emerging Contaminants/Pfas
 Private Wells And/Or Septic
 Communities With Potential Public And/Or Environmental Health Risk
 Non Traditional/Hard To Reach Systems Such As Manufactured Housing Communities, Schools Etc.
 Stormwater (Year 2 And Beyond)

Trust-building And Community Engagement
 Water And Wastewater Finance
 Utility Management
 Cost Of Service And Rate Studies
 Stormwater Management

EPA's PFAS Analytic Tools

The screenshot displays the EPA's PFAS Analytic Tools web interface. At the top is a blue navigation bar with the EPA logo and several menu items: Integrated Map, Drinking Water (UCMR), Drinking Water (State), Production, Environmental Media, Discharge Monitoring, Contact Us, Superfund Sites, Federal Sites, Industry Sectors, Transfers, Spills, and Toxic Releases. Below the navigation bar is a grey status bar indicating "No selections applied".

On the left side, there is a sidebar with a "PFAS Analytic Tools Home" button and a section titled "Scope of Drinking Water Samples for Public Water Systems (PWSs)". This section contains two buttons: "Most Recent Sample at PWS" (highlighted in dark grey) and "All Samples at PWS". Below this are filter sections: "Filters:" with an "EPA Region" dropdown menu and a "State Territory or Tribe" dropdown menu. At the bottom of the sidebar is a toggle for "Include Non-Detects:" set to "No".

The main area features a world map with data points. The United States and Alaska are densely populated with colored dots (purple, blue, green, yellow, orange, red, black) representing individual PWS samples. The map is labeled with continents (ASIA, EUROPE, SOUTH AMERICA, OCEANIA) and oceans (Indian Ocean, North Pacific Ocean, North Atlantic Ocean, South Pacific Ocean, South Atlantic Ocean). On the right side of the map, there are zoom in (+) and zoom out (-) icons.

EPA Treatability Database

 An official website of the United States government [Here's how you know](#) ▾



[Environmental Topics](#) ▾

[Laws & Regulations](#) ▾

[Report a Violation](#) ▾

[About EPA](#) ▾

Related Topics: [Water Research](#)

[CONTACT US](#)

Drinking Water Treatability Database (TDB)

Information on treatment processes for controlling contaminants

On This Page

- [Overview and Search Capabilities](#)
- [Applications](#)
- [Platform and Compatibility](#)
- [Future Updates and Support](#)

EPA's Drinking Water Treatability Database (TDB) is an easy to use tool that provides

Access the

EPA Performance Models

 An official website of the United States government [Here's how you know](#) ▾



Search EPA.gov



[Environmental Topics](#) ▾

[Laws & Regulations](#) ▾

[Report a Violation](#) ▾

[About EPA](#) ▾

Related Topics: [Water Research](#)

[CONTACT US](#)

Environmental Technologies Design Option Tool (ETDOT)

Modeling for contaminant removal from drinking and waste waters

The Environmental Technologies Design Option Tool (ETDOT) is a suite of software models that provides engineers with the capability to evaluate and design systems that use granular activated carbon or ion exchange resins for the removal of contaminants, including PFAS, from drinking water and wastewater.

On this Page

- [Suite of Models](#)



For more information:

Erskine Benjamin II

Manager

DWTAS

U.S. EPA Region 4

Benjamin.Erskine@epa.gov

Emma Inhorn

Lead Technical Assistance/DWTAS

U.S. EPA Region 4

Inhorn.Emma@epa.gov

Daniel Asriel

PFAS/EC Technical Assistance/DWTAS

U.S. EPA Region 4

Asriel.Daniel@epa.gov