



# Alabama Rural Water Association

"Dedicated to improving the lives of Rural Alabamians."

# Welcome!!!



We at the ARWA strive to do *everything we can* to promote the water and wastewater service industry. We have a professional staff with hands-on experience in all aspects of running successful utilities of all sizes. We are your Member-Service organization. We intend to be the resource you can't live without.

~Rob White IV

[www.alruralwater.com](http://www.alruralwater.com) 



**Rob White IV**

Executive Director

# ARWA Board of Directors

ARWA

## District 1

**Eric Hill**

Franklin County, AL  
Term Expires Dec 31, 2023

## District 2

**Jeaniece Slater**

Morgan County, AL  
Term Expires Dec 31, 2025

## District 3

**Chris O'Rear**

Walker County, AL  
Term Expires Dec 31, 2024

## District 4

**Vincent Atkins**

Greene County, AL  
Term Expires Dec 31, 2025

## District 5

**Glen Hyatt**

Cleburne County, AL  
Term Expires Dec 31, 2026



## District 6

**VACANT**

County, AL  
Term Expires Dec 31, 2023

## District 7

**Michael Sawyer**

Monroe County, AL  
Term Expires Dec 31, 2023

## District 8

**VACANT**

County, AL  
Term Expires Dec 31, 2026

## District 9

**Mark Bohlin**

Baldwin County, AL  
Term Expires Dec 31, 2024

## District 10

**James Dixon**

Geneva County, AL  
Term Expires Dec 31, 2024

# Water Circuit Riders

**Darrell Brewer**  
North



**Justin Gardner**  
Central



**Michael Spence**  
South



ARWA

# Leak Detection

Counting gallons is not we what set out to do but is a must if we are to run a successful and viable utility. Therefore; non-revenue (lost) water is not something we can abide. Call us for FREE leak detection services today!.

**Cumberland Mountain,  
60 gpm found saving  
\$5,572.80 / month**



**Baldwin County,  
208 gpm found saving  
\$21,385.00/ month**



**Lauderdale County,  
50 gpm found saving  
\$4,039.20 / month**



**Pickens County,  
270 gpm found saving  
\$20,412.00 / month**



USDA Wastewater Technicians

Mike Baumgartner & Steve Berry



Smoke Testing

Akron, AL

15 Points of I&I detected saving approximately \$4,500.00 to this town.



Smoke Testing

Childersburg, AL

8 Points of I&I detected saving approximately \$2,00.00 to this town.



Sanitation is more important than Independence.

~Mahatma Gandhi

Energy Technician

ARWA

# Robert “Bobby” Newton



Opportunity	Estimated Annual Savings		Estimated Cost (\$)	Approximate Payback (in yrs)
	Electrical (kWhr)	Savings (\$)		
Install One (1) – 150 Hp VFD’s at Well Site # 2 (assumes 70% operation setting)	103,294	\$9,936	\$9,240	0.93 yrs
Install One (1) – 150 Hp VFD’s at Well Site # 3 (assumes 70% operation setting)	92,114	\$14,364	\$9,240	0.64 yrs
Install One (1) – 125 Hp VFD’s at Well Site # 4 (assumes 70% operation setting)	51,754	\$9,370	\$8,100	0.86 yrs
Install One (1) – 125 Hp VFD’s at Well Site # 5 (assumes 70% operation setting)	43,362	\$7,511	\$8,100	1.08 yrs
Install One (1) – 150 Hp VFD’s at Well Site # 6 (assumes 70% operation setting)	128,655	\$21,899	\$9,240	0.42 yrs
Install One (1) – 150 Hp VFD’s at Well Site # 7 (assumes 70% operation setting)	79,002	\$13,726	\$9,240	0.67 yrs
Install One (1) – 150 Hp VFD’s at Well Site # 8 (assumes 70% operation setting)	85,934	\$14,703	\$9,240	0.63
Install One (1) – 300 Hp VFD’s at Well Site # 9 (assumes 70% operation setting)	504,111	\$63,116	\$18,847	0.30
<b>Total</b>	<b>1,088,226</b>	<b>\$154,625</b>	<b>\$81,247</b>	<b>0.69 yrs</b>

# Source Water Protection Technician Mike Rief



# ARWA

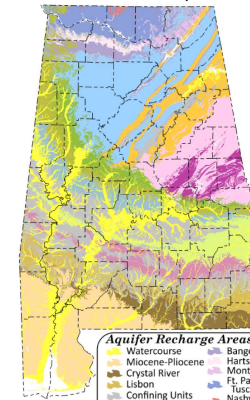
### Alabama Water Facts

Alabama is blessed with abundant freshwater resources. The USGS estimates that 10% of the fresh surface water resources within the entire United States either originate in or flow through the State of Alabama. Approximately one-sixth of Alabama's 52,419 square mile surface area is accounted for by lakes, reservoirs, ponds, wetlands, estuaries, and flowing rivers and streams. The annual surface water supply of water flow through Alabama's 16 River Basins is estimated at 33.5 trillion gallons. With 56 inches of annual average rainfall combined with its diverse landscape from the Coastal Plain in the south to the foothills of the Appalachian Mountains in the north Alabama's perennial and intermittent stream network is expansive and diverse in physical, ecological, and biological characteristics.



Alabama is provided groundwater from the 20 aquifers defined by the Geological Survey of Alabama ([gsa.state.al.us](http://gsa.state.al.us)). According to the Geological Survey of Alabama we have approximately 586.5 trillion gallons of freshwater of which 533 trillion gallons are stored in Alabama's 17 water-bearing aquifers. Of the 56-inch average annual rainfall approximately 7 inches enters the ground for aquifer recharge.

### Alabama's Aquifers



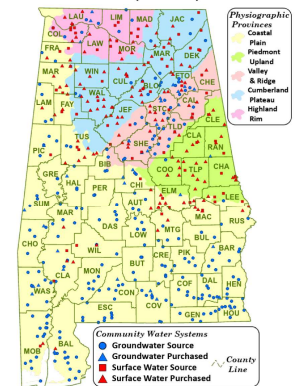
- Aquifer Recharge Areas - GSA**
- Watercourse
  - Miocene-Pliocene
  - Crystal River
  - Lisbon
  - Confining Units
  - Nanafalia
  - Ripley
  - Eutaw
  - Gordo
  - Coker
  - Pottsville
  - Bangor
  - Hartselle
  - Monteagle
  - Ft Payne
  - Nuscumbia
  - Nashville
  - Stones River
  - Valley & Ridge
  - Metagranite
  - Metasedimentary & Metavolcanic
  - Major Water Bodies

In areas outside Alabama's Coastal Plain fresh groundwater may only extend to 150 feet below the surface due to respective geological formations. Within the Coastal Plain groundwater may be present to a depth of 2,000 or more feet.

The Community Water Systems (CWSs) map below demonstrates how prevalent groundwater use is as a primary drinking water source from the aquifers of the Coastal Plain Physiographic Province. Likewise, most of the primary source water in the northeast portion of the state, the Piedmont Upland, the Valley and Ridge, the Cumberland Plateau, and the Highland Rim Physiographic Provinces, is sourced from surface water due to less available and accessible groundwater. According to the U.S. EPA's Safe Drinking Water Information System's 2022 dataset for Alabama's CWSs 30% of the population (286 Utilities) use groundwater from a primary source and 70% of the population (218 Utilities) are served from a primary surface water source. Past estimates of groundwater to surface water utilization have been 40% to 60%, respectively.

### Alabama's

### Community Water Systems



- Community Water Systems**
- Groundwater Source
  - Groundwater Purchased
  - Surface Water Source
  - Surface Water Purchased
- County Line



# ARWA Training

**We Are Your #1 Resource in Alabama for Water and Wastewater Training.**

All responsible Water and Wastewater Utility personnel will seek training any time they can get it. We at the ARWA are your training provider. In addition to our FREE training classes, we offer great Conferences as well as Online and Certification Training and Opportunities.

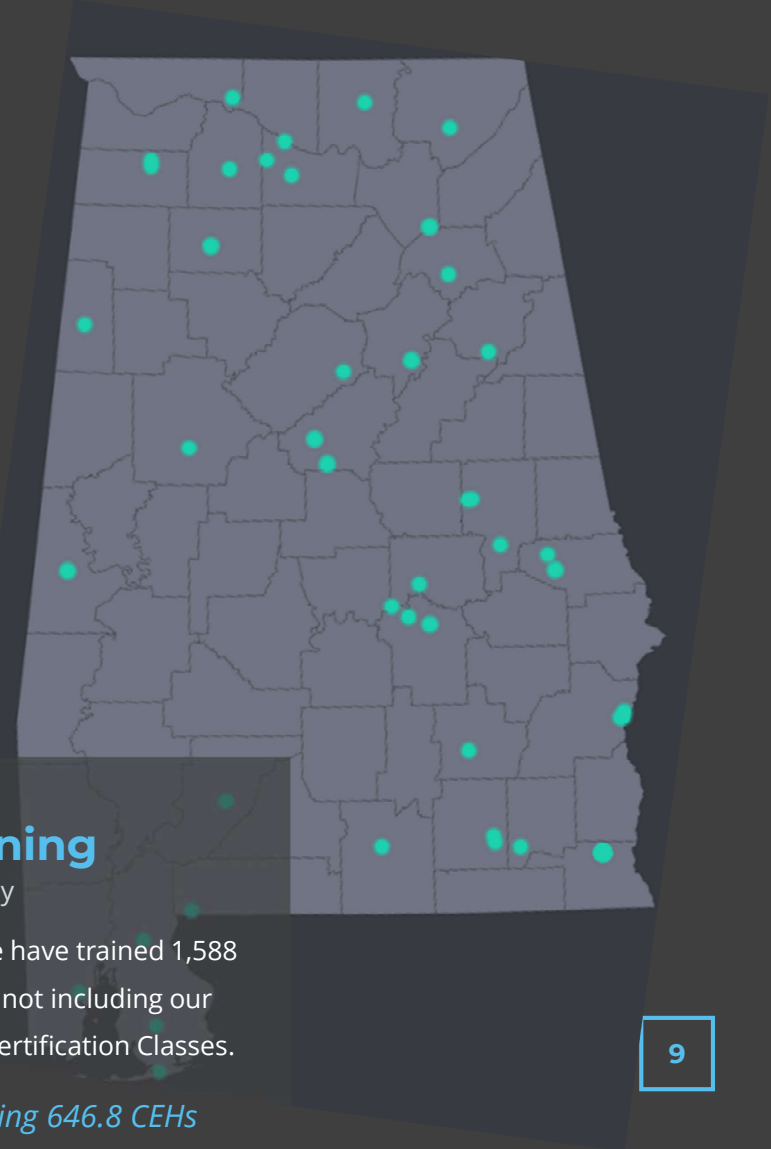


## 2023 Training

FREE Training Only

So far, in 2023 we have trained 1,588 folks in Alabama; not including our Conferences or Certification Classes.

*63 Classes offering 646.8 CEHs*



# ARWA Advocacy

**We Are Your Legislative Advocates for Water and Wastewater Resources in Alabama.**

We are your voice in Congress and the Senate, both State and Federal for Alabama Water and Wastewater Initiatives. Please consider supporting and joining us in providing our message to leadership!



# ARWA Advocacy Continued

Please let us help if you have concerns dealing with water and wastewater legislation. Locally, or otherwise.



JULY 19, 2023

## WIREGRASS NATIVE TESTIFIES AT SENATE AG SUBCOMMITTEE HEARING

*ARWA Executive Director Rob White shares about importance of supporting rural water systems*

**WASHINGTON** — U.S. Senator Tommy Tuberville (R-AL), Ranking Member of the U.S. Senate AG Committee Subcommittee on Rural Development and Energy, today introduced Alabama Rural Water Association's Executive Director Rob White to testify before the Committee. In the hearing, titled "Modernizing our Community Water Systems," Mr. White spoke about the challenges facing small, rural water systems and areas where the United States Department of Agriculture (USDA) Rural Development (RD) can improve its footprint in the rural water space.

Senator Tuberville's introductory remarks can be found below.



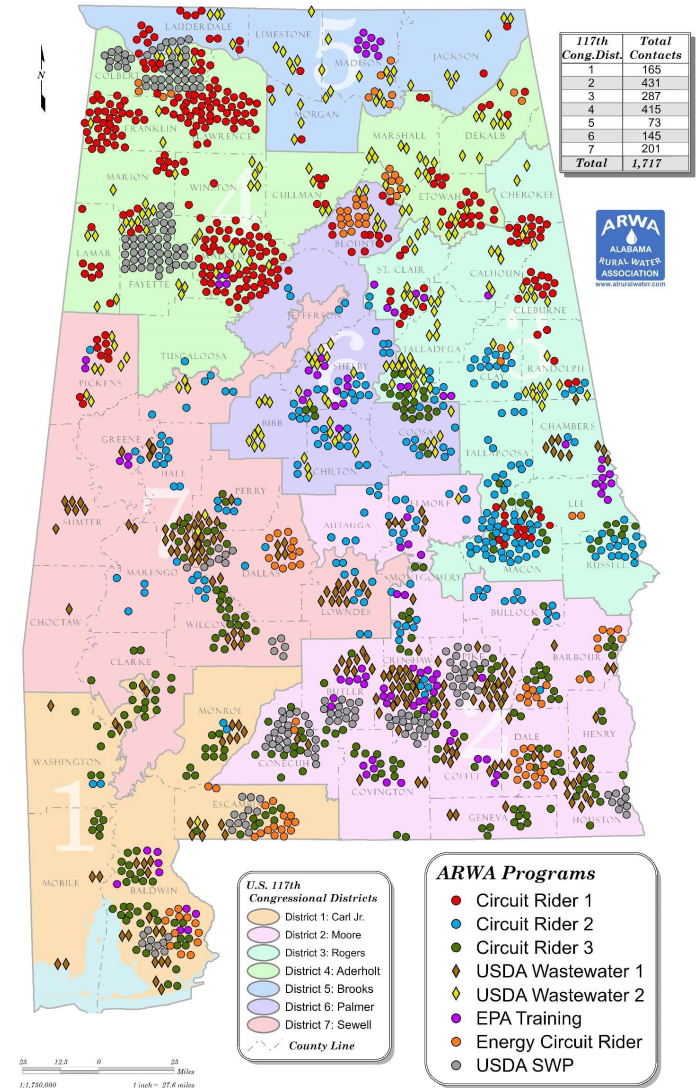
# ARWA Presence

We are with you.

Our staff stays on the road. Heading to all corners of Alabama in order to assist you. Whenever you need us, just call. We will probably have a staff member near you that can swing by.



January - September 2022 On-Site Technical Assistance



# ARWA Emergency Response



Generator Delivery



Bottled Water Procurement

# ARWA Emergency Response



**New Response  
Equipment Training**



**Christmas Leak Detection**

# ARWA Emergency Response



Setting up Starlink in FL for Response



Hurricane Response

# ARWA Emergency Response



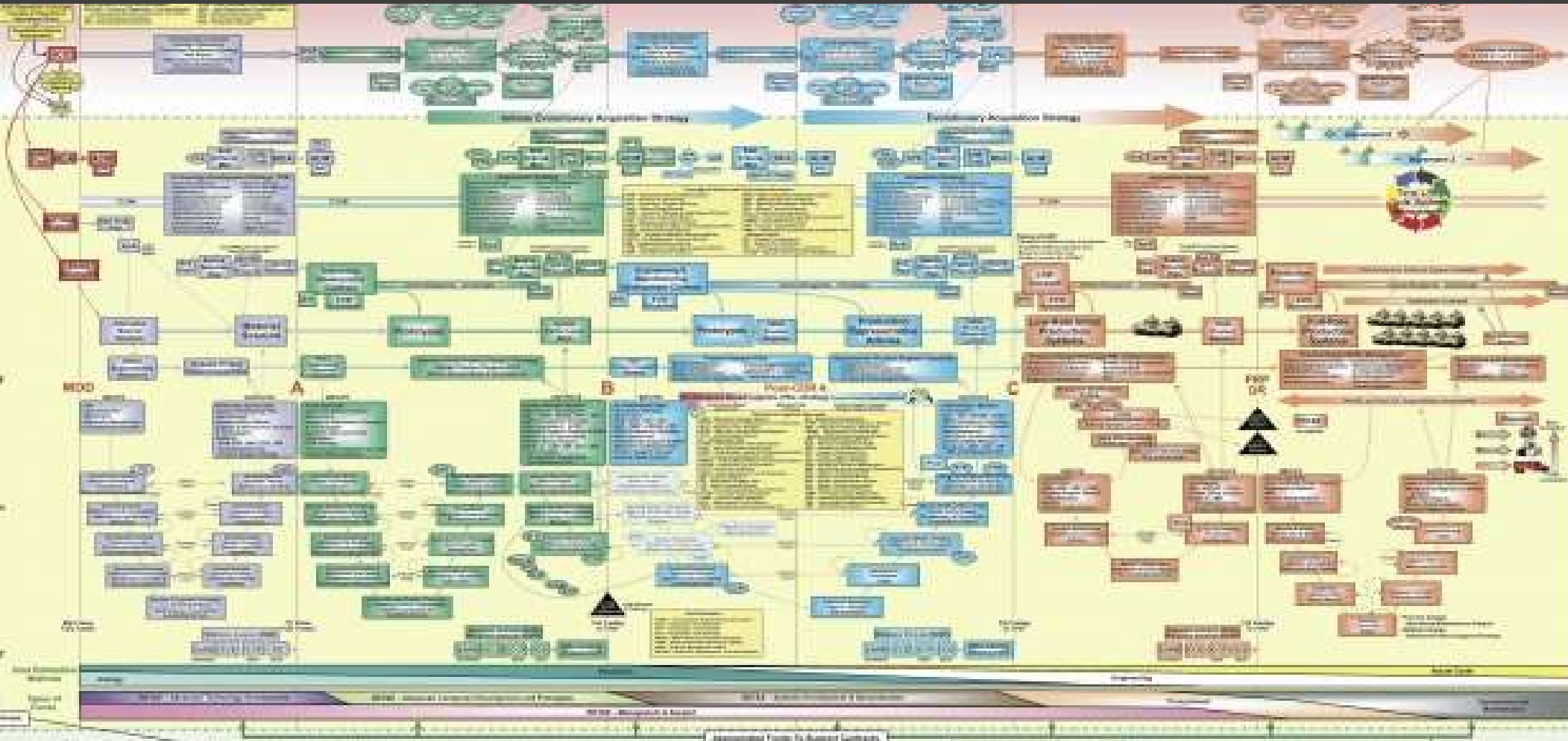
The View from Clanton  
EMA Response



More States Join AL to Assist  
after a Hurricane



# ARWA Services (Comprehensive)



# Social (and other) Media “alruralwater”

**Facebook**  
facebook.com/alruralwater

**Like  
Us**

**Read  
Us**

**The  
Waterline**  
Our Quarterly Magazine

**X (Twitter)**  
@alruralwater

**Follow  
Us**

**See  
Us**

**Instagram**  
instagram/alruralwater

**Youtube**  
ARWA TV! It is a thing!

**Watch  
Us**

**Visit  
Us**

**Website**  
alruralwater.com



The ARWA logo is displayed in white, uppercase letters on a dark grey rectangular background in the top right corner of the image.A silver, spherical mesh microphone is positioned in the center of the image, slightly above the main text area. The background is a blurred bokeh of warm, golden lights.

Save the Dates!

# ARWA Events

Mark these dates down on your Calendar today!

[More Detail](#)





**February 6 – 8, 2024**

**NRWA's Rural Water Rally**

Washington, D.C.

Contact Us Today!



A nighttime photograph of a modern hotel building with a prominent fountain in the foreground. The building's facade is illuminated with warm yellow lights, and a central tower is lit with blue and green lights. The sky is dark blue, and a fountain with multiple jets of water is lit up in the foreground. A semi-transparent dark blue overlay covers the middle of the image, containing text and a button.

**March 10 – 13, 2024**

**ARWA's 46th Annual  
Technical Training Conference**

Montgomery, AL

Rooms Available Now!





**May 22 - 24, 2023**

**AL/FL Joint Technical Training Conference**

Orange Beach, AL

Rooms Available Now!



An aerial photograph of Savannah, Georgia, taken during a vibrant sunset. The sky is filled with streaks of orange, pink, and purple. The city's architecture is visible, including a prominent yellow building with arched windows on the left and a red brick building in the center. A dark semi-transparent rectangle is overlaid on the image, containing white text.

**September 9 - 11, 2024**

**NRWA WaterPro Conference**

Savannah, GA

Rooms Available Now!



# Conference Participation



## Scholarships

Help pay for school for kids of folks who work in the Water and Wastewater Business!



## Water Taste Test

Your drinking water taste the best? Prove it!



## Awards Ceremony

Our job is a thankless one. Let's help correct that. Give thanks to the very best!



Rob White IV  
ARWA Executive Director  
(334) 396-5511  
rwhite@alruralwater.com

# THANK YOU

I look forward to meeting and  
speaking with you all.