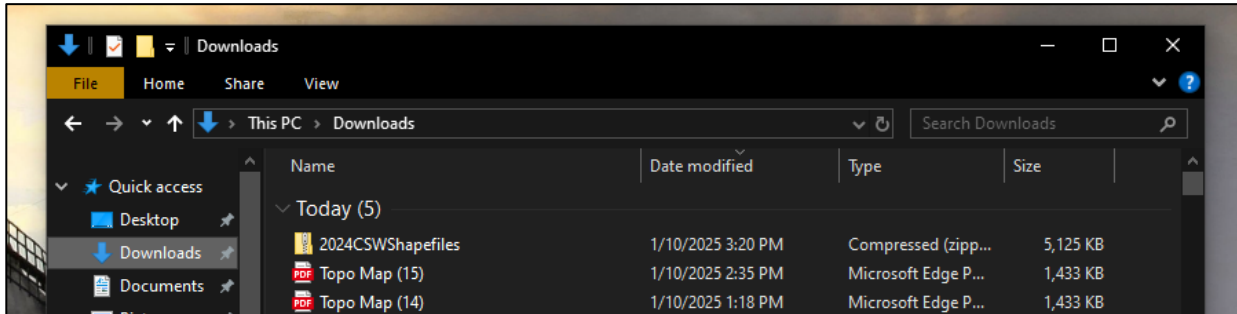
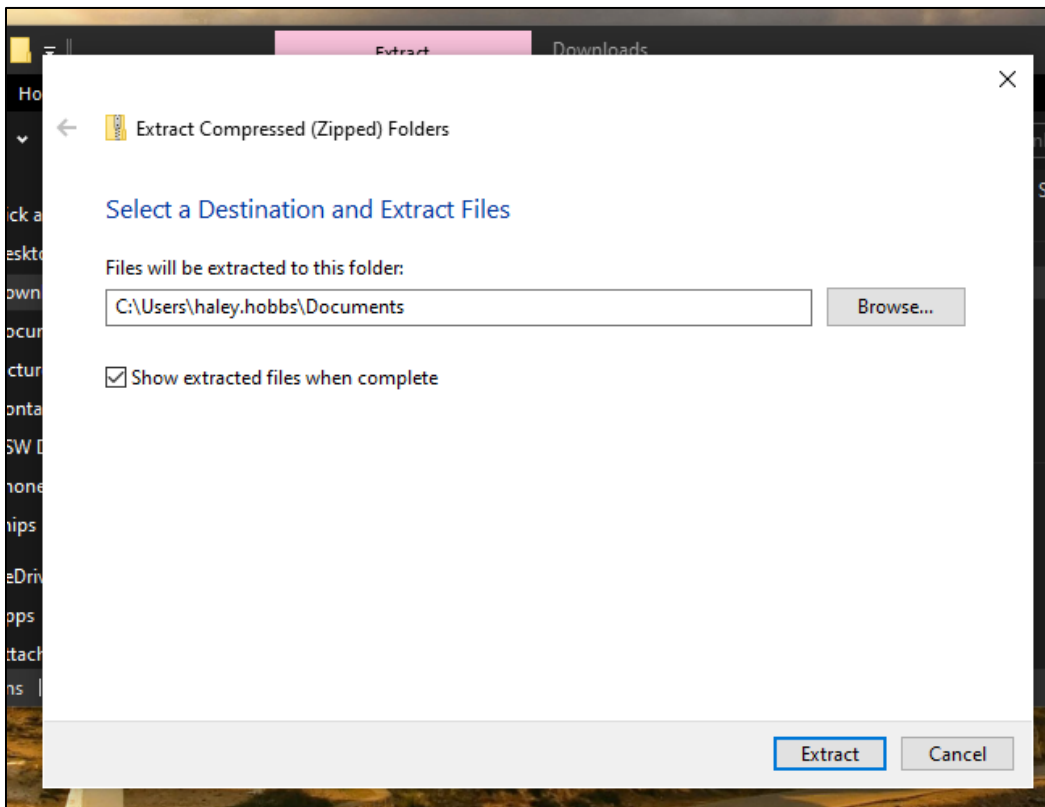


How to Upload Construction Stormwater GIS Files to Google Earth

1. Go to ADEM's Construction Stormwater page:
<http://adem.alabama.gov/programs/water/constructionstormwater.cnt>
2. Click on the 'Construction Stormwater GIS Files' link. This should automatically download a zipped folder with all shapefiles.
3. The file will save as a zipped folder '2024CSWShapefiles' in the Downloads Folder of your computer.

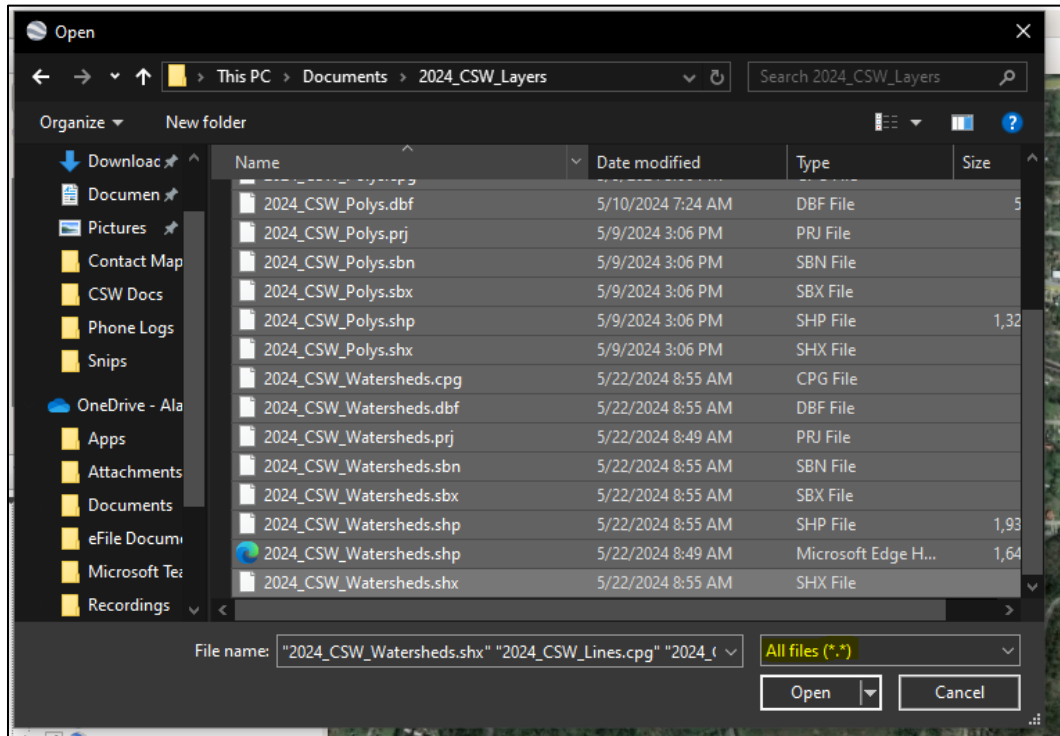


4. Right click on the file and choose 'Extract all' to unzip the folder. You will be prompted to choose the Destination folder for extracted file. (This is the folder you will use to upload the shapefiles in Google Earth, so make sure to remember where you save it.)

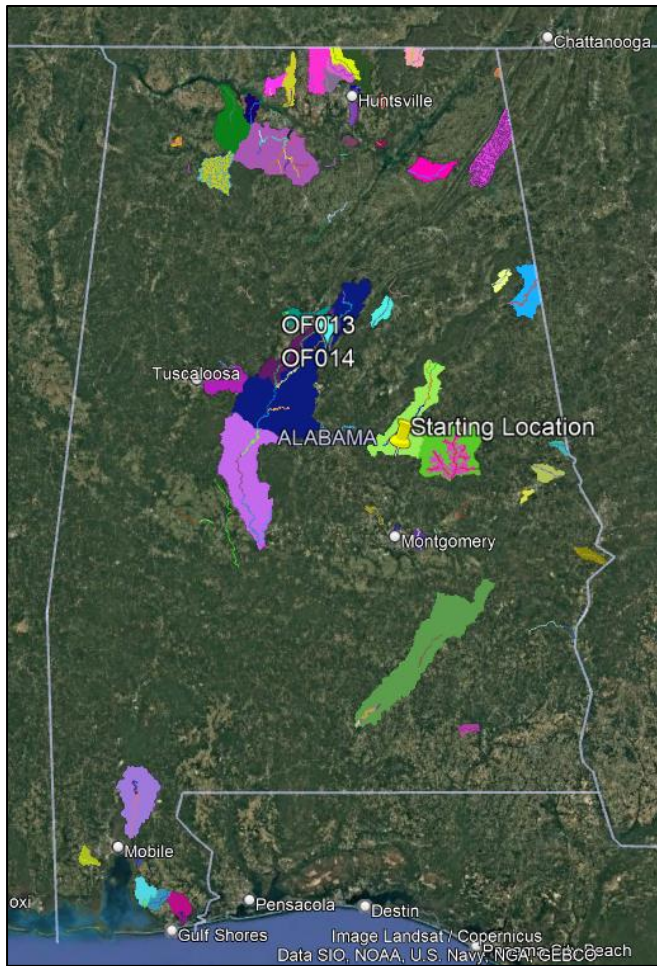
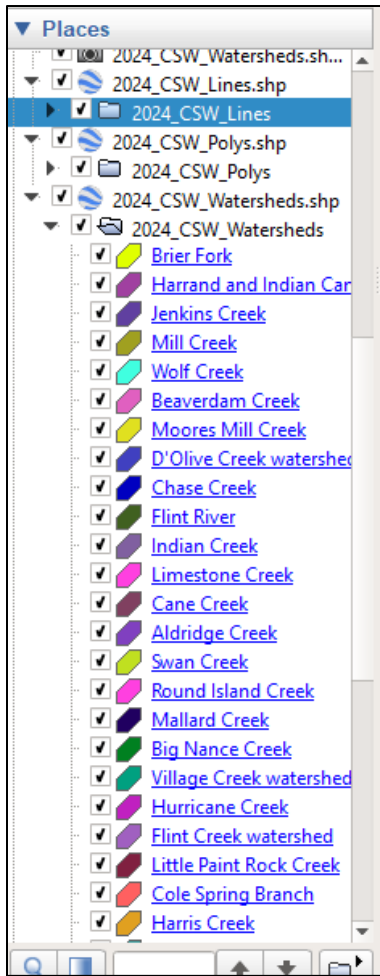


5. Once you click the 'Extract' button, a new unzipped folder '2024CSWShapefiles' will be saved. The GIS files must be saved to your computer prior to importing into Google Earth.
6. Open Google Earth, click 'File' and then click 'Import'.

7. Double click on the unzipped '2024CSWShapefiles'.
8. Make sure that the File Type is 'All files (*.*)' and select all of the files in folder (click on the first shapefile, then press CTRL and the letter A to select all). Once all files are highlighted, click the 'Open' button.



9. Next, you will be prompted to change the style template. Select 'No' for all prompts. The shapefile properties (color, transparency, etc.) can be altered after they are imported. Below is an expanded picture of how the shapefiles will appear in Google Earth. To save them to Google Earth, when exiting the program you will be prompted to save to 'My Places', select 'Yes'.
 - **Note:** The waterbody names will not appear in the "My Places" section below if a style is not created and will instead show up as [No name]. If you want the names you will need to create a style and set the name field to "Waterbody"



Revised January 2025